



APT-120 12" ANDROID PAYMENT TERMINAL



ANDROID TABLET POS/PAYMENT TERMINAL

The TEAMSable APT-120 is not a regular payment terminal; it is a next generation smart terminal that incorporates EMV, NFC & MSR card reader capabilities with a removable 12" tablet-monitor for a fully functional point of sale system experience that is perfect for countertop, line-busting and inventory applications for retail, hospitality and many other verticals. The APT-120's ingenious design of truly fusing a payment terminal with a point of sale terminal provides maximum savings by reducing 2 terminals into 1, reduces installation timelines, and increases overall product ROI when compared to separately purchased terminal installations.

APT-120 Key Features at a Glance:

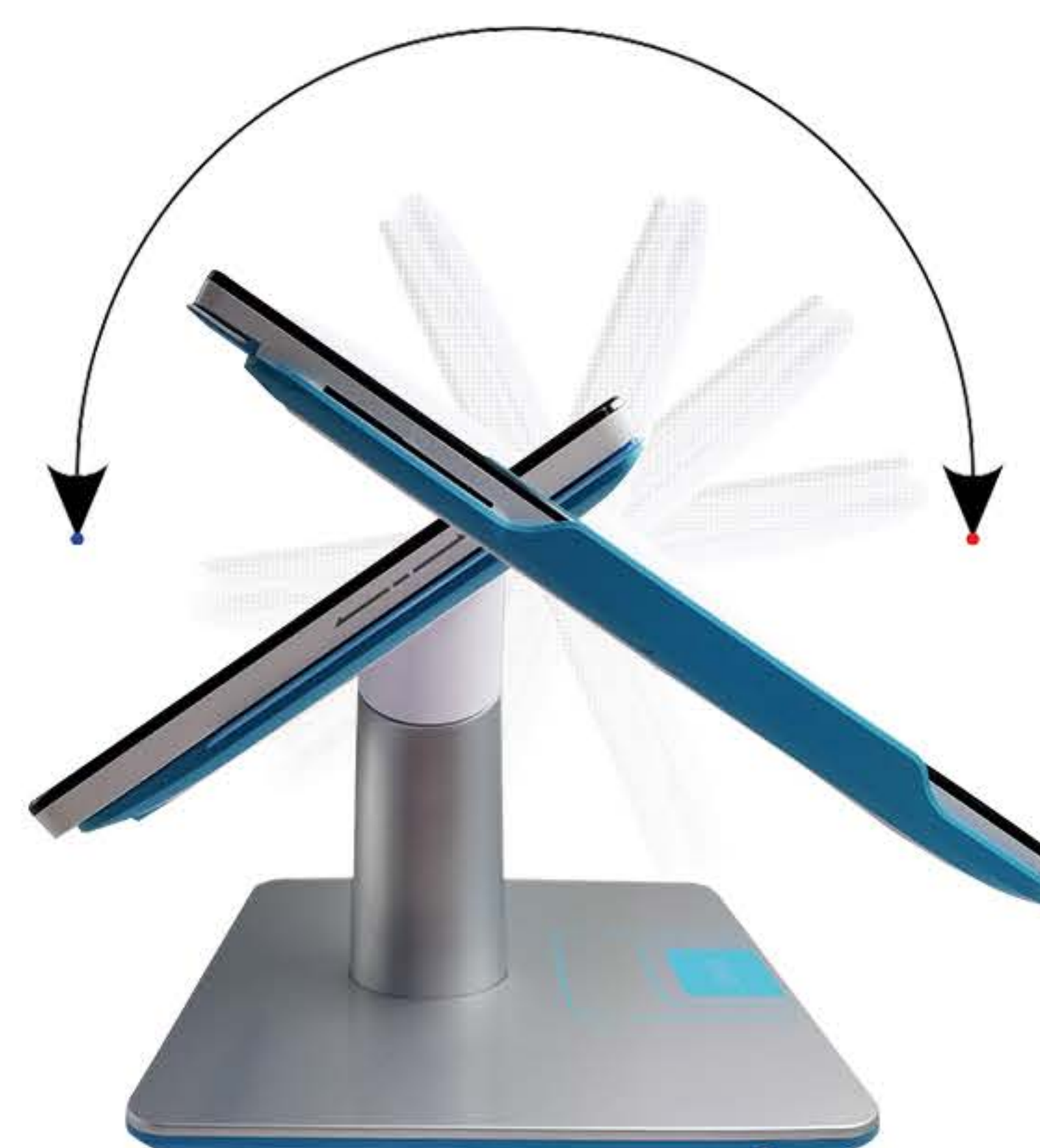
- Durable 12" PCAP Touchscreen
- 180 Degrees Rotating Monitor for Customer Facing Applications
- 1.2GHz Quad Core CPU for Optimum Processing Power
- Detachable I/O Adaptor for Optimum Cable Management
- LAN, WiFi & Bluetooth Interfaces for Versatile Install Options



Integrated
EMV & MSR



Cable-Free
Management



180 Degree
Flip Design



Customer Facing
Application



www.teamsable.com

1911 Hartog Dr. San Jose, CA 95131



1-408-775-8384



sales@teamsable.com

Certification and Software

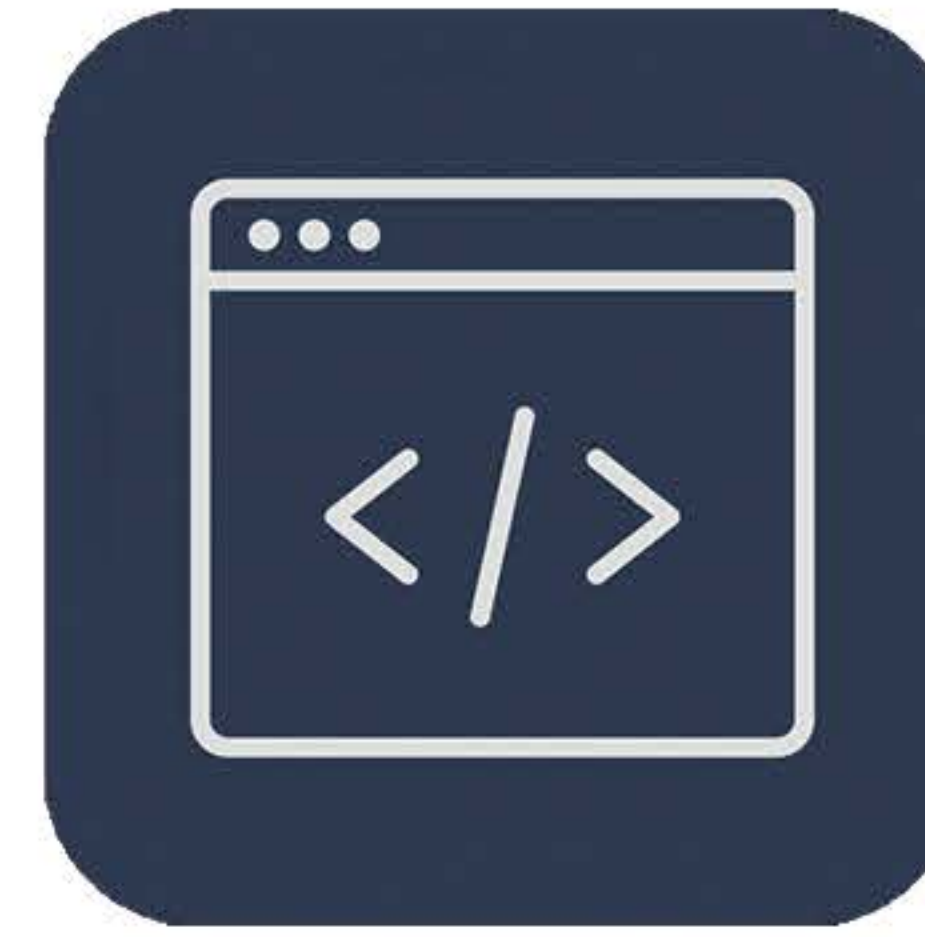
- Supports Major Payment Processors
- PCI 4.X & EMV L3 Certified
- Payment APK Available
- Windows API Available
- Android SDK Available



**Certified
EMV & PCI**



**Supports
Major Processors**



**Windows
API Availbale**



**Android
SDK Availbale**



APT-120			
CPU and Memory		IO Port on Tablet	
Operating System	Android 5.1	Micro USB	USB OTG x 1
CPU	QuadCore 1.2Hz	SIM Card	1 Slot
Memory	1GB DDR3	PSAM Card	1 Slot
Storage	8GB eMMC	Speaker	Support
TF-CARD	Up to 32GB	Microphone	Support
Display		Headset	3.5mm Jack
Panel	12" IPS 1366 x 768	Extended Dock Port	
Touch	5 Point Capacitive	USB	x5
Wireless Connectivity		LAN	x1
WIFI	IEEE 802.11b/g/n, WLAN 2.4GHz+5GHz	VGA	x1
Bluetooth	BLE 4.0 Dual Mode, V4.0+EDR	DC Socket	DC 2.5mm x 1
GPS	Built-in GPS	Power	
Cellular Module	3G and 4G	Power Supply	Input 100-240V, Output 5V/2A
Card Reader		Battery	3.7V/6900mAh Lithum battery
Magnetic Reader	Track 1/2/3, ISO7810&7811, Bi-Directional, PCI 4.X and EMV Co.	Physical Dimension	
IC Chip	ISO 7816, Encrypted head, PCI 4.X and EMV Co.	Size	288x181x15mm
NFC	ISO/ IEC 14443, Type A&B	Weight	920g
Camera		Operating Temperature	-20°C - 60°C
Front Camera	5M Pixel, AF	Storage Temperature	-30°C - 80°C
Rear Camera	5M Pixel, AF		
Stand			
Rotation		180 Degrees Rotate	
Charging		Support	
Material		Metal	
Weight		2.2kg	